



# COMPANY OVERVIEW



**Infinitech**  
인피니텍



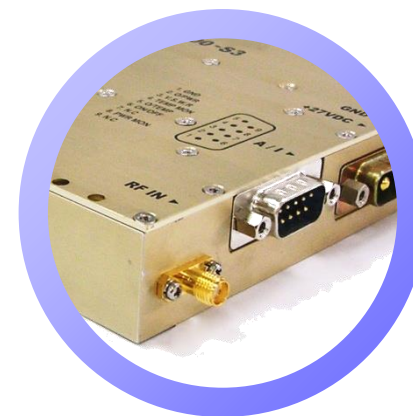
## INDEX



1 Profile

2 Products

3 Clients





1

## Profile

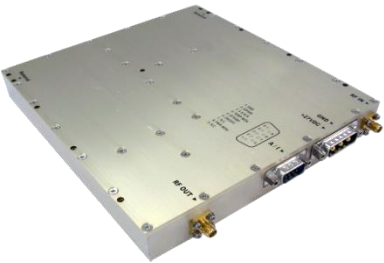
Company name	Infinitech, Co., Ltd.
Representative	Harrison Huh
Founded	2008-6-25
Business Area	Telecommunications, Broadcasting, EMC, Test & Measurement, Military&Security
Major Products	SSPA Modules, SSPA Rack Systems, TMA
Address	4 <sup>th</sup> floor, Dongkwang Building, 26 Deokcheon-ro, Man An gu, Anyang-si, Gyeonggi-do, South Korea
Contact	Tel. +82-31-465-5864 Fax. +82-31-465-5861
Home page	<a href="http://www.infini-tech.co.kr">http://www.infini-tech.co.kr</a>



2

## Products

### 2-1 Personal Communication Amplifier(HPA)



Model	Frequency	Max Output Power	Application
ITA0900HM	800, 900MHz	8, 16 , 30 Watt	LTE, CDMA, GSM, WCDMA
ITA1800HM	1800, 1900MHz	16 , 25 , 45 Watt	
ITA2100HM	2100MHz	8 , 16 , 30 Watt	

### 2-2 Personal Communication Amplifier(Feed Forward LPA)



Model	Frequency	Max Output Power	Application
ITA0900LM	900MHz Bands	120 , 180 Watt	CDMA, GSM, WCDMA
ITA1800LM	1800MHz Bands	120 , 180 Watt	
ITA2100LM	2100MHz Bands	60 , 120 Watt	



2

## Products



### 2-3 Broadband Amplifier

Model	Frequency	Max Output Power	Application
ITRS0830K	80MHz ~ 3GHz	200 Watt	Communications Testing, EMC Testing
ITRS1030A	1GHz ~ 3GHz	50 Watt	
ITRS0830KM	80MHz ~ 6GHz	100 Watt	

### 2-4 General Communication Amplifier

Model	Frequency	Max Output Power	Application
ITGA Series	500KHz ~ 6GHz	10 ~ 200 Watt	Communication, Broadcasting, Military, Medical





2

Products

## 2-5 DTV Broadcasting Amplifier



Model	Frequency	Max Output Power	Application
ITS0650HS-4650	470 ~ 806MHz	40 Watt	DTV
ITS0650HS-4950	470 ~ 806MHz	90 Watt	
ITS0650HS-5252	470 ~ 806MHz	150 Watt	

## 2-6 DMB Broadcasting Amplifier



Model	Frequency	Max Output Power	Application
ITA0195HS-3740	180 ~ 210MHz	5 Watt	DMB
ITS0195HS-5252	180 ~ 210MHz	150 Watt	
ITS0195HS-5454	180 ~ 210MHz	250 Watt	



2

## Products

### 2-7 ISM Amplifier



Model	Frequency	Max Output Power	Application
ITA2450HS-4750	2450MHz	50 Watt	Industrial, Medical, Scientific
ITAXXXXHS-XXXX	1.8 ~ 600MHz	500 Watt	

### 2-8 Test and Measurement Amplifier



Model	Frequency	Max Output Power	Application
ITS0850HS-5055	700 ~ 1000MHz	100 Watt	Power Test, PIM Test
ITS1900HS-5055	1800 ~ 2000MHz	100 Watt	
ITS2150HS-5055	2000 ~ 2300MHz	100 Watt	



2

Products

## 2-9 The ultimate coverage enhancement product Single Band MCPA System, TMB



TYPE	MODEL	Frequency	Application
<b>MCPA System</b>	TMMS 800	800MHz Bands	CDMA, GSM, EDGE WCDMA, TDMA
	TMMS 900	900MHz Bands	
	TMMS 1800	1800MHz Bands	
	TMMS 2100	2100MHz Bands	
<b>Tower Mounted Booster</b>	TMB 900	900MHz Bands	GSM
	TMB 1800	1800MHz Bands	





2

Products

2-10 The ultimate coverage enhancement product  
**Dual Band MCPA System**



TYPE	MODEL	Frequency	Application
MCPA System	TMMS 900/1800	GSM 900MHz/ DCS 1800MHz	CDMA, GSM, EDGE WCDMA, TDMA
	TMMS 900/2100	GSM 900MHz/ WCDMA 2100MHz	
	TMMS 1800/2100	DCS 1800MHz/ WCDMA 2100MHz	

\* Module Type PA

No	Model Name	Frequency (MHz)	Pout (Watts)	Gain (dB)	Voltage (V)	Current (A)	Mod. Type	Size(mm)	Enable/Disable	FWD Detector	REV Detector	Temp. Monitor	Current Monitor	VSWR Alarm	Over temp. Alarm	Over Power Alarm
1	MA0202HM-3750	174~230	5	50	28V	3A	DAB	200x165x50mm	o	o	o	o		o	o	o
2	MA0460HM-3950	450~470	8	50	28V	3A	MC	180x150x30mm	o	o	o	o		o	o	o
3	MA0465HM-4553	462~468	30	53	28V	6A	LTE	185x140x32mm	o	o	o	o		o	o	o
4	MA0475HM-4253	465~485	16	53	28V	6A	MC	180x150x30mm	o	o	o	o		o	o	o
5	MA0853HM-4856	851~856	60	56	28V	13A	MC	270x270x60mm	o	o	o	o		o	o	o
6	MA0860HM-3950	851~869	8	50	28V	3A	MC	180x150x30mm	o	o	o	o		o	o	o
7	MA0860HM-4253	851~869	16	53	28V	6A	MC	180x150x30mm	o	o	o	o		o	o	o
8	MA0743HM-4548	728~758	30	48	28V	5.5A	LTE	185x140x28mm	o	o	o	o		o	o	o
9	MA0780HM-4245	758~803	16	45	28V	2.5A	LTE	170x110x28mm	o	o	o	o		o	o	o
10	MA0780HM-4548	758~803	30	48	28V	5.5A	LTE	185x140x28mm	o	o	o	o		o	o	o
11	MA0806HM-4245	791~821	16	45	28V	2.5A	LTE	170x110x28mm	o	o	o	o		o	o	o
12	MA0881HM-4548	869~894	30	48	28V	5.5A	WCDMA	185x140x28mm	o	o	o	o		o	o	o
13	MA0881HM-4750	869~894	50	50	28V	9A	WCDMA	200x170x28mm	o	o	o	o		o	o	o
14	MA0881HS-5660	869~894	400	60	32V	32A	CW	290x180x32mm	o	o	o	o		o	o	o
15	MA0942HM-4245	925~960	16	45	28V	2.5A	LTE	170x110x28mm	o	o	o	o		o	o	o
16	MA0942HM-4548	925~960	30	48	28V	5.5A	LTE	185x140x28mm	o	o	o	o		o	o	o
17	MA0942HM-4750	925~960	50	50	28V	9A	WCDMA	200x170x28mm	o	o	o	o		o	o	o
18	MA0942HS-5660	925~960	400	60	32V	32A	CW	290x180x32mm	o	o	o	o		o	o	o
19	MA1087HS-5053	960~1215	100	53	28V	10A	CW	203x91x28mm	o	o	o	o		o	o	o
20	MA1337HS-5760	960~1715	500	60	32V	50A	CW	350x250x40mm	o	o	o	o		o	o	o
21	MA1842HM-3945	1805~1880	8	45	28V	2.5A	LTE	150x70x32mm	o	o	o	o		o	o	o
22	MA1842HM-4245	1805~1880	16	45	28V	2.5A	LTE	170x110x28mm	o	o	o	o		o	o	o

\* Module Type PA

No	Model Name	Frequency (MHz)	Pout (Watts)	Gain (dB)	Voltage (V)	Current (A)	Mod. Type	Size(mm)	Enable/Disable	FWD Detector	REV Detector	Temp. Monitor	Current Monitor	VSWR Alarm	Over temp. Alarm	Over Power Alarm
23	MA1842HM-4548	1805~1880	30	48	28V	5.5A	LTE	185x140x28mm	o	o	o	o		o	o	o
24	MA1842HS-5660	1805~1880	400	60	32V	33A	CW	290x180x32mm	o	o	o	o		o	o	o
25	MA1960HM-4245	1930~1990	16	45	28V	2.5A	LTE	170x110x28mm	o	o	o	o		o	o	o
26	MA1960HM-4548	1930~1990	30	48	28V	5.5A	LTE	185x140x28mm	o	o	o	o		o	o	o
27	MA1960HM-4750	1930~1990	50	50	28V	9A	WCDMA	200x170x28mm	o	o	o	o		o	o	o
28	MA1960HS-5660	1930~1990	400	60	32V	33A	CW	290x180x32mm	o	o	o	o		o	o	o
29	MA2140HM-4245	2110~2170	16	45	28V	2.5A	WCDMA	170x110x28mm	o	o	o	o		o	o	o
30	MA2140HM-4548	2110~2170	30	48	28V	5.5A	WCDMA	185x140x28mm	o	o	o	o		o	o	o
31	MA2140HS-5660	2110~2170	400	60	32V	33A	CW	290x180x32mm	o	o	o	o		o	o	o
32	MA2355HM-4245	2340~2370	16	45	28V	2.5A	WCDMA	170x110x28mm	o	o	o	o		o	o	o
33	MA2355HM-4548	2340~2370	30	48	28V	5.5A	WCDMA	185x140x28mm	o	o	o	o		o	o	o
34	MA2655HM-4245	2620~2690	16	45	28V	2.5A	LTE	170x110x28mm	o	o	o	o		o	o	o
35	MA2655HM-4548	2620~2690	30	48	28V	5.5A	LTE	185x140x28mm	o	o	o	o		o	o	o
36	MA2655HM-4750	2620~2690	50	50	28V	9A	WCDMA	200x170x28mm	o	o	o	o		o	o	o
37	MA2655HS-5660	2620~2690	400	60	32V	33A	CW	290x180x32mm	o	o	o	o		o	o	o
38	MA3550HM-3840	3500~3600	6	40	28V	1.5A	LTE	180x82x27mm	o	o						
39	MA5800HS-5356	5750~5850	200	56	32V	24A	CW	250x180x32mm	o	o	o	o		o	o	o

\* System Type PA

No	Model Name	Frequency (MHz)	Pout (Watts)	Gain (dB)	Voltage (V)	Power	Size(mm)	Enable/Disable	FWD Detector	REV Detector	Temp. Monitor	Current Monitor	VSWR Alarm	Over temp. Alarm	Over Power Alarm
1	SA0290HS-5053	80~500	100	53	100~240	500W	R3U	o			o	o			
2	SA0290HS-5356	80~500	200	56	100~240	900W	R3U	o			o	o			
3	SA0290HS-5760	80~500	500	60	100~240	2500W	R5U	o			o	o			
4	SA0540HS-5356	80~1000	200	56	100~240	1500W	R3U	o			o	o			
5	SA0750HS-5053	500~1000	100	53	100~240	500W	R3U	o			o	o			
6	SA0750HS-5356	500~1000	200	56	100~240	900W	R3U	o			o	o			
7	SA0750HS-5760	500~1000	500	60	100~240	2500W	R5U	o			o	o			
8	SA1500HS-4750	500~2500	50	50	100~240	400W	R2U	o			o	o			
9	SA1700HS-4750	700~2700	50	50	100~240	400W	R2U	o			o	o			
10	SA1500HS-5053	1000~2000	100	53	100~240	900W	R3U	o			o	o			
11	SA2500HS-5053	2000~3000	100	53	100~240	900W	R3U	o			o	o			
12	SA4250HS-4750	2500~6000	50	50	100~240	500W	R2U	o			o	o			
13	SA4500HS-4750	3000~6000	50	50	100~240	500W	R2U	o			o	o			
14	SA0881HS-6063	869~894	1000	63	32V	160A	R5U	o	o		o			o	o
15	SA0942HS-6063	925~960	1000	63	32V	160A	R5U	o	o		o			o	o
16	SA1842HS-6063	1805~1880	1000	63	32V	160A	R5U	o	o		o			o	o
17	SA1960HS-6063	1930~1990	1000	63	32V	160A	R5U	o	o		o			o	o
18	SA2140HS-6063	2110~2170	1000	63	32V	160A	R5U	o	o		o			o	o
19	SA2655HS-6063	2620~2690	1000	63	32V	160A	R5U	o	o		o			o	o



3

## Clients

Country	END USER	Major Products
Taiwan	CHT	GSM/DCS/WCDMA MCPA System
	FET	
	TWM	
Thailand	AIS	GSM MCPA System
China	Chinese Operators	GSM/DCS 120W, 180W LPA
Others	Saudi-Arabia, Europe, India, and so on	MCPA System, TMB
Domestic	LGU+	HPA
	KT	DPD PA
	KBS	DTV Power Amplifier
	Testing Organizations	EMS Power Amplifier
		PIMD PA
	DMB Operators	DMB PA
	Incheon International Airport	TRS MCPA
	Seoul Metro	FM PA



# Thank you

---

**Contact us for more detail specifications or information.**

Address: 4<sup>th</sup> floor, Dongkwang Building, 26 Deokcheon-ro,

Man An gu, Anyang-si, Gyeonggi-do, South Korea

Sales manager: Ju-Wan Jin Tel: +82-31-465-5864 Fax: +82-31-465-5861

[jjw@infini-tech.co.kr](mailto:jjw@infini-tech.co.kr)

Sales partner: Kaby Oh Tel: +82-10-4042-1228

[kaby.oh@cotechwave.com](mailto:kaby.oh@cotechwave.com)

Homepage: <http://www.infini-tech.co.kr>